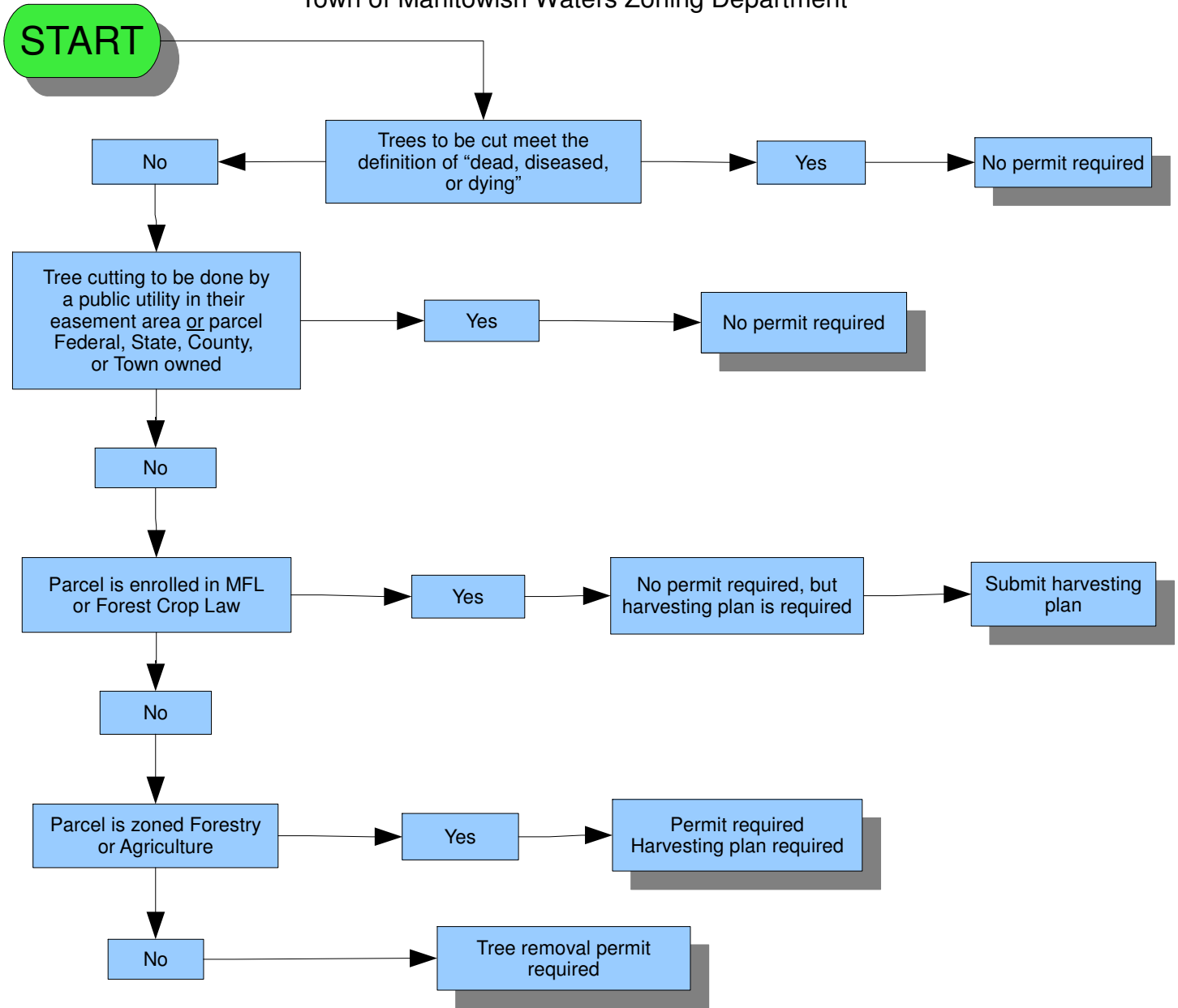
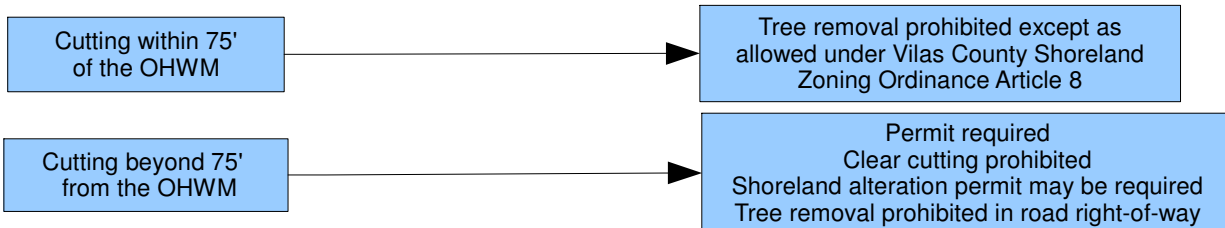


# Tree Removal/Logging Permit Process Flow Chart

Town of Manitowish Waters Zoning Department



.....**Tree Removal and Logging Limitations**.....\*See Ordinance for definitions & full details\*.....



- Exceptions to prohibition on clear cutting:
1. Building footprint plus 30'
  2. Septic system
  3. Driveway/private roadway, max. 20' W.
  4. Commercial parking lots in Districts 3,4,5, and 6 as are allowed
  5. In areas zoned Forestry or Agriculture

- Logging limitations:
1. Within 75 ' of OHWM of rivers, streams and lakes: cutting prohibited
  2. Within 75' to 150' of OHWM of rivers & streams: select cutting only
  3. Within 75' to 300' of OHWM of lakes: select cutting only
  4. Select cutting requires a minimum of 60 sq. ft. of basal area per acre evenly distributed; undergrowth to be preserved
  5. 24 inch maximum slash height permitted